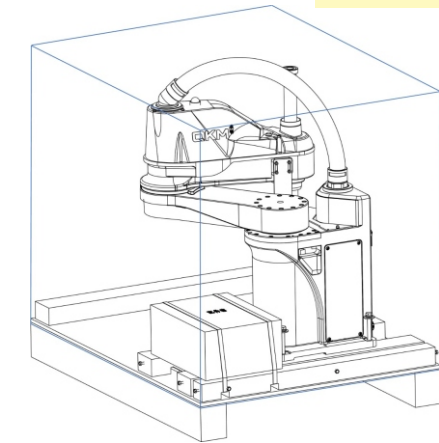


# Quick Install Guide

AH10 Robot AH10-0800-0204-2000  
AH10-0800-0204-4000



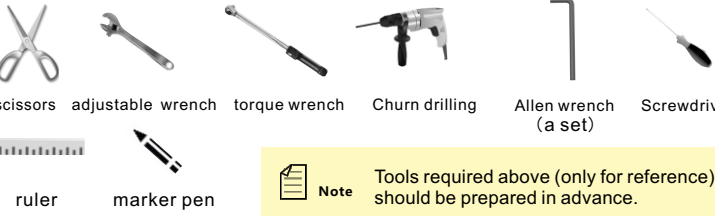
## Out of box Audit



**Note** Applied to each AH10 robot. Basic configuration (package and quantity) - for your reference only, should according to the actual situation.

- Robot body
- Accessory box
- User's manual

## Installation Toolkit



**Note** Tools required above (only for reference) should be prepared in advance.

## Resources download

Please access to QKM website to obtain resources related to our product ( user's manual, software system and training material, etc.)

## Service and technical support

Before you contact our technical representative, please provide follow information:

- Robot model No.
- Robot serial No.
- Any accurate expression of alarm infor. and description of the problem.

## QKM Technology(Dongguan)Co.,Ltd

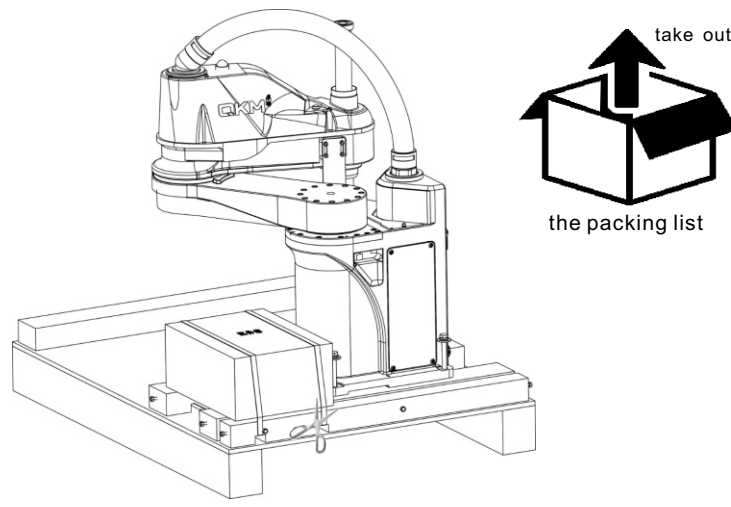
Tower A, Building 17, Headquarters 1, No.4 Xinzhu Road, Songshan Lake High-tech Industrial Development Zone, Dongguan , Guangdong, China

Tel: +86 0769-27231381  
Fax: +86 0769-27231381-8053  
Zip code: 523808  
Email: service@qkmtch.com  
Website: www.qkmtch.com



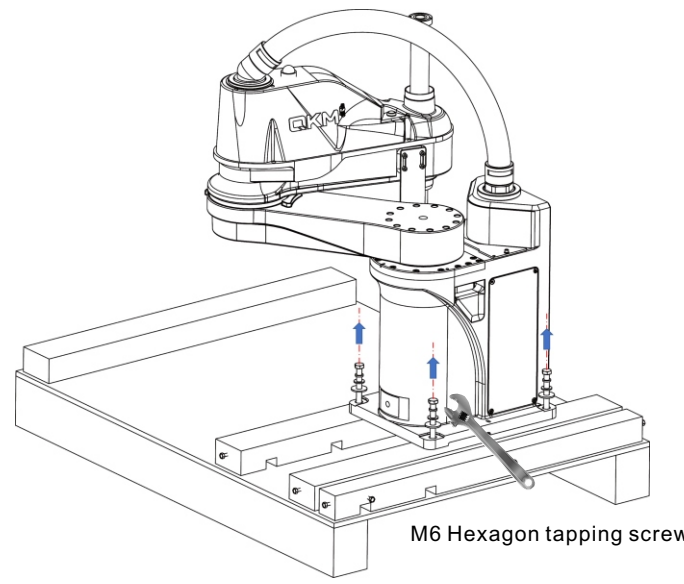
Scan QR code to follow QKM

## 1 Disassemble accessory box



- Cut off the cable tie to unload accessory box.
- Take out the required items from accessory box, confirm the product components and status according to the packing list.

## 2 Disassemble pedestal

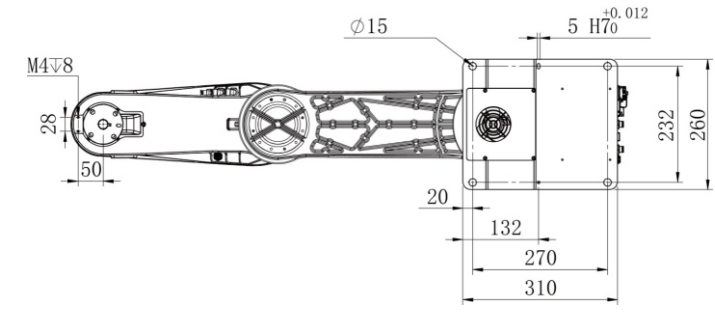


- Use a adjustable wrench to remove the fixing screw.

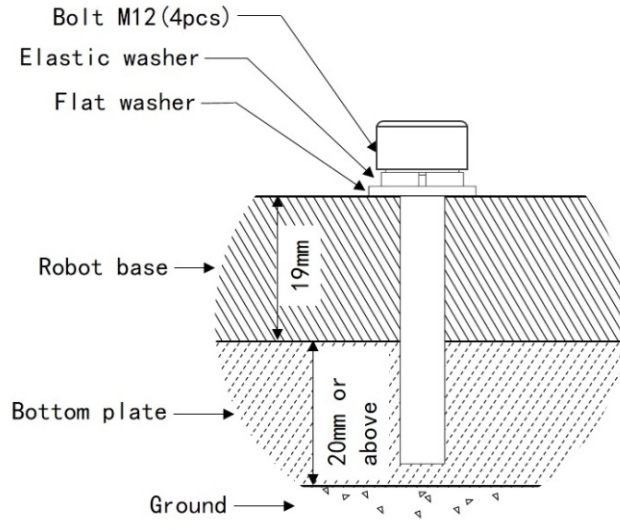
**NOTICE** After the robot base screw is removed, the robot arm needs to be manually supported. Avoid tilting the robot due to its own center of gravity.

**NOTICE** When transporting robots, at least 2 people should support them with their hands and work together. Assist in transporting the robot to the installation rack (the entire robot Weight is 50kg).

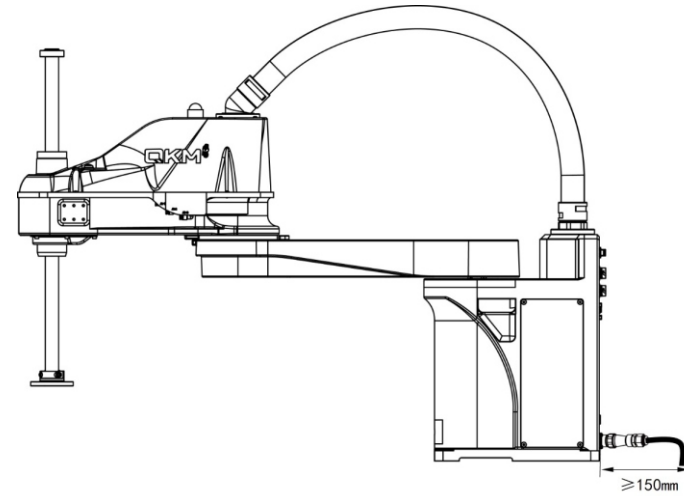
## 3 Install pedestal



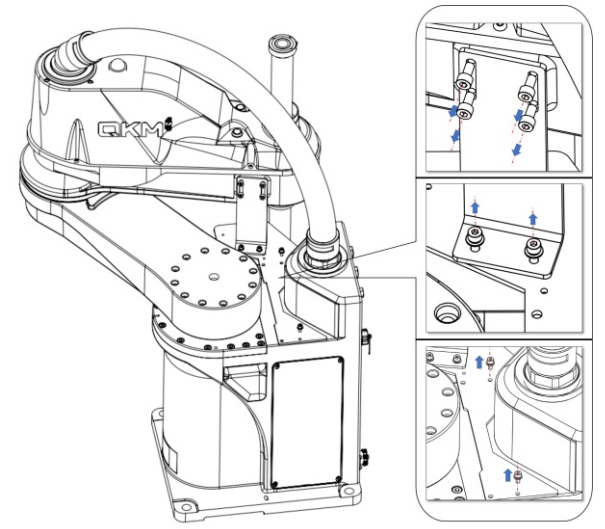
- Design and prepare mounting holes according to base dimensions.
- Mounting the base of the robot in a formal way.



**NOTICE** The back of the robot base should be reserved for more than 150mm space for cable installation

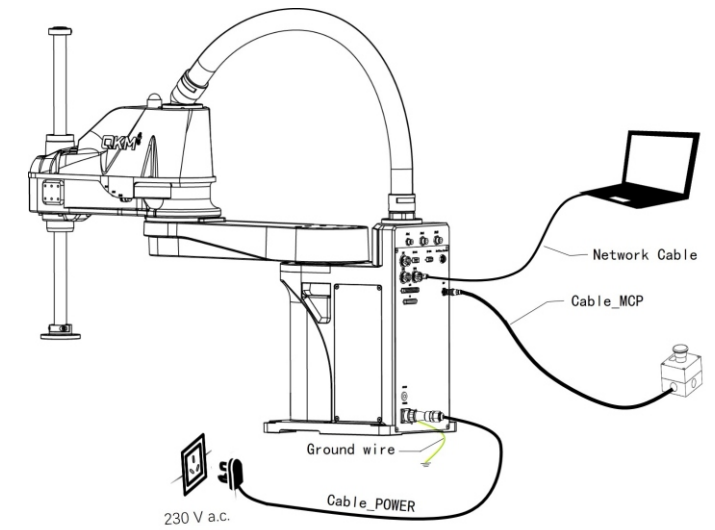


## 4 Removal of fixed plate



- Use the hexagon wrench to remove the screws from the fixed plate.
- Push the first and second robotic arms to separate the external fixed plates and remove the fixed plates for storage.

## 5 Installation of Wires and Cables



- Install the network cable, ground wire, cable \_MCP and cable \_POWER according to the schematic diagram.

**NOTICE** Pay attention to the safety of electricity, please do not install the cable with power.